



DOULTON HOUSE,  
CHELSEA CREEK, SW6  
Asking Price £1,095,000 Leasehold

T. +44 (0) 20 7935 0011  
E. [enquire@napierwatt.co.uk](mailto:enquire@napierwatt.co.uk)  
[WWW.NAPIERWATT.CO.UK](http://WWW.NAPIERWATT.CO.UK)

**NAPIER WATT**  
PROPERTY CONSULTANTS

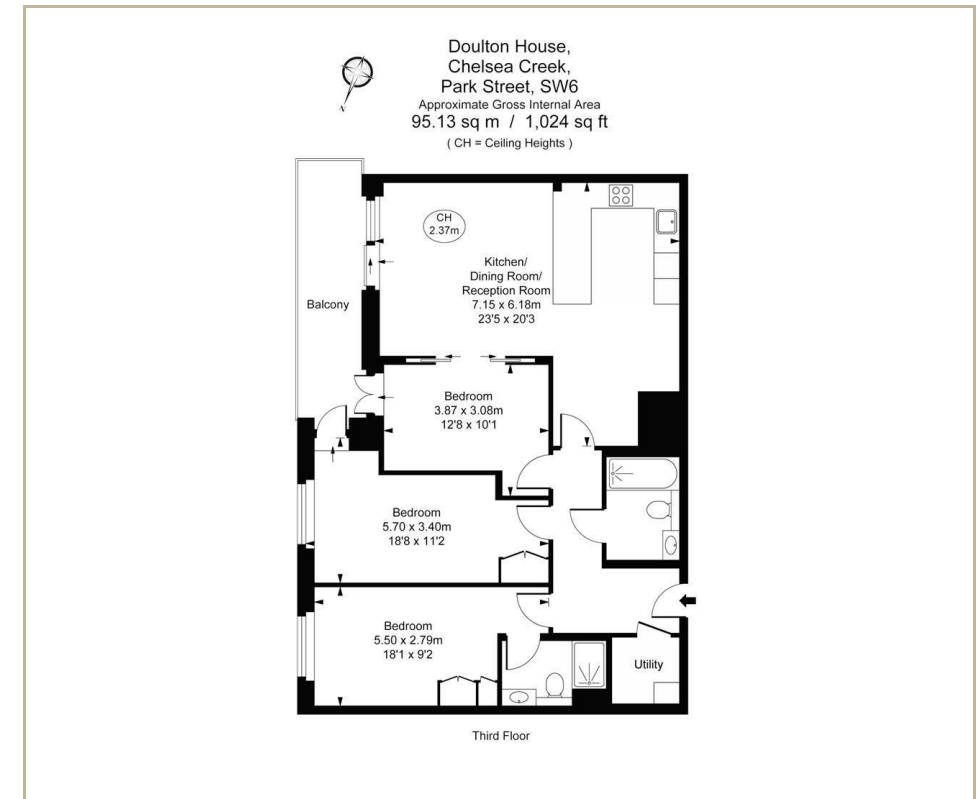
## Description

A well-presented and modern two/three-bedroom apartment located on the third floor of the prestigious Chelsea Creek development, Doulton House. Spanning an approximate 1,024 sqft / 95 sqm, the apartment offers a spacious and bright living/dining area, private balcony leading out from reception room and two bedroom and a sleek finished fitted kitchen with integrated appliances such as fridge/freezer, hob, oven and microwave.

This property includes a storage cupboard for utility and video-entry system. Doulton House benefits from an on-site gym, swimming

pool, spa and 24 hour concierge. The nearby famous Kings Road offers a wide range of designer boutiques, top class restaurants, bars and quaint cafes. Within a short walking distance from Imperial Wharf Overground station and Fulham Broadway Underground station both offering excellent links around London.

Entrance Hall : 3 Bedrooms : 2 Bathrooms (1 ensuite) : Kitchen : Balcony : Gym : Swimming Pool : Spa : 24 Hour Concierge : EPC Rating B



## TERMS

Leasehold 999 years from 1 June 2010 ie 998 years

Service Charge : £3,454.88 half year

Ground rent £275 half year

**For Clarification** we wish to inform prospective purchasers that we have prepared these sales particulars as a general guide. We have not carried out a survey, nor tested the services, appliances and specific fittings. Room sizes are approximate and rounded: they are taken between internal wall surfaces and therefore include cupboards/shelves, etc. Accordingly, they should not be relied upon for carpets and furnishings. Formal notice is given that all fixtures and fittings, carpeting, curtains/blinds and kitchen equipment, whether fitted or not, are deemed to be removable by the vendor unless specifically itemised within these sales particulars.

T. +44 (0) 20 7935 0011  
E. [enquire@napierwatt.co.uk](mailto:enquire@napierwatt.co.uk)  
[WWW.NAPIERWATT.CO.UK](http://WWW.NAPIERWATT.CO.UK)

**NAPIER WATT**  
PROPERTY CONSULTANTS